

MTL5

Value Data Centre With Easy Access To Airport

Quick Facts:

- Purpose-built facility for secure, remote enterprise applications
- 5K SQF customizable space
- Eco-friendly, green renewable energy
- Diverse dark fibre ring to primary carrier hotel with access to 100+ unique networks
- Access to the Montréal Internet Exchange (QIX) at MTL3
- Easy access to Montréal-Pierre Elliott Trudeau International Airport

30+ Network Neutral Data Centres Throughout North America

U.S.:

Ashburn • Columbus • Dallas
• Jacksonville • Lakeland •
Minneapolis • New Jersey

CAN:

Montreal • Toronto • Vancouver

Tour the MTL5 Data Centre:

2351 Alfred Nobel,
Montréal, Québec

To schedule, contact:

Sales@cologix.com or
+1.855.497.2537

Top Connectivity at Purpose-Built, Value Facility

Cologix's purpose-built data centre at 2351 Alfred Nobel is optimal for remote enterprise applications. The facility is linked to Cologix's 9 additional data centres with robust connectivity via high-count, diverse fibre and direct access to the MMR in Montreal at Cologix's MTL3 facility at 1250 Rene-Levesque West. Cologix offers low latency connections to hyperscale cloud providers, including Amazon Web Services®, Google Cloud Platform, Oracle FastConnect, Microsoft® Azure and IBM Cloud.

Relentless Infrastructure

Cologix is committed to continuing infrastructure upgrades, including a new uninterruptible power system (UPS). The data centre's uniquely efficient design facilitates rapid power deployments and the ability to dynamically cool equipment specific to the needs of individual cabinets.

Certified & Secure

The data centre technical floor is supported 24/7 by on-site technicians, keycard access, and a closed-circuit TV (CCTV) system. The Cologix Montréal data centre also supports PCI compliance on an individual basis, as well as customized security for dedicated space.

Why Cologix in Montreal?

As the market leader in Montréal, Cologix offers the most robust, flexible infrastructure and secure, scalable, low-latency connectivity at the digital edge. We operate the largest MMR with access to 100+ carriers from our MTL3 data centre and access to hyperscalers. Customers value the richness of connectivity options along with reliability, upgrades, redundancies and ease of doing business with Cologix.



The Cologix logo, featuring the word "cologix" in a lowercase, sans-serif font with a stylized blue swoosh above the "i".

MTL5 MONTREAL DATA CENTRE

Site Specifications

MTL5: 2351 Alfred Nobel

Site Information

MTL5 Space:	5K SQF
Total Montreal Space:	790K SQF
Building:	1999, renovated 2006, 2013-14; concrete, steel; seismic 2A
In Floodplain:	No
Floors:	15" anti-static raised floors
Space Configuration:	Custom cabinets & cages
Elevator:	(1) service elevator: 3,000 lbs, 6'9" x 5'

Security

Closed-Circuit TV:	Yes
Customized Security:	Yes
Access:	Keycard
Man Traps:	Yes

Environmental Controls

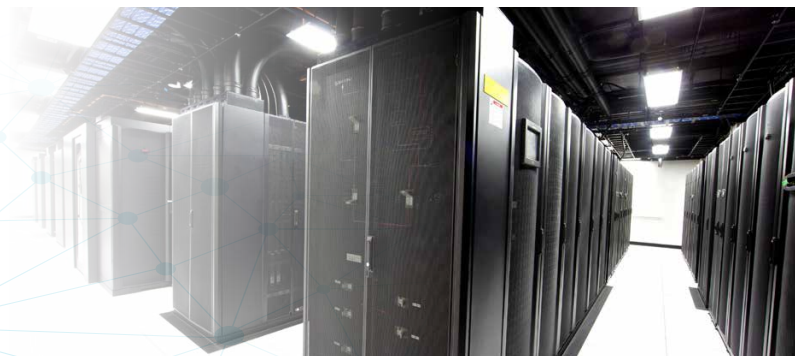
Cooling Capacity:	44 tons, N+1
Cooling Type:	Chilled water
Fire Protection:	Cross-zoned
Fire Suppression:	Pre-action dry pipes
Humidification:	Yes, deionized ultrasonic
Remotely Monitored:	Yes

Power

Energy:	Renewable, green hydroelectric power
Entrance:	1 power entrance
UPS:	150 kVA Mitsubishi
Load Design:	150 watts/SQF (high-density configurations available)
Configurations:	Primary
ATS:	Yes, diverse
Battery:	VRLA Battery with 1 backup generator

Connectivity

Meet-Me-Room (MMR):	Yes, Cologix controlled
Number of Networks:	100+ network options
Network Neutral:	Yes
Fibre Entrance:	Diverse paths of building fibre entrance
Cross Connects:	Copper, fibre, virtual
Internet Exchange:	Yes, via lit services to access Montreal Internet Exchange (QIX) at MTL3
Metro Connect:	Passive waves & lit connections
Communications:	Diverse dark fibre between 10 Cologix facilities and carrier hotels



Customer Support

24/7 remote hands support.
P: +1.855.4IX.HELP (+1.855.449.4357)
E: support@cologix.com

WWW.COLOGIX.COM
B20V8-MTL5