



COL2

Enterprise-Grade Interconnect Hub

Quick Facts:

- Sits at golden triangle of Washington DC, New York & Chicago
- High density enabled, up to 20kW+ per cabinet
- Access to 50+ unique carriers plus direct connectivity to Ohio-IX
- Most densely connected interconnect site in the region

30+ Network Neutral Data Centers Throughout North America

U.S.:

Ashburn • Columbus • Dallas
• Jacksonville • Lakeland •
Minneapolis • New Jersey

CAN:

Montreal • Toronto • Vancouver

Tour the COL2 Data Center:

555 Scherers Court
Columbus, Ohio

To schedule, contact:

Sales@cologix.com or

+1.855.497.2537

Top Uptime, Redundancy & Access

Our Tier III certified facility is the ideal location combines the most robust enterprise-grade infrastructure with the most densely connected interconnect site in the region. COL2 offers 20K SQF at 555 Scherers Court, the ideal location for primary IT deployments that require 100% uptime and network performance, even the backups have backups for fault-tolerant, seamless, end-to-end system.

Unmatched Connectivity at Cologix Columbus Data Center Campus

The Most Connected Data Center in Ohio Cologix customers access 50+ unique networks in the Meet-Me-Room (MMR) and the Cologix ecosystem. COL2 connects to Columbus FiberNet, Ohio-IX internet exchange, 30+ public, private and hybrid cloud service provider, including AWS, Microsoft Azure, Google Cloud Platform, IBM Cloud and Oracle FastConnect. C

Superior Safety, Security & Redundancy Solutions

With three utility entrances, six uninterruptible power systems (UPSs), two generators and redundant air conditioning units, the Cologix Columbus facility offers unparalleled resiliency, rapid power deployments, and the ability to cool high-density setups.

Why Cologix Columbus?

Within a 10-hour drive of 47% of the U.S. population, Cologix Columbus offers robust infrastructure with top connectivity. Ideally located for primary IT deployments, it is a perfect location for disaster recovery deployments, backing up primary sites in Chicago and New York. Cologix Columbus offers reliability, upgrades, and redundancies augmented by the ease of doing business with us.



cologix

COL2 COLUMBUS DATA CENTER

Site Specifications

COL2: 555 Scherers Court

Site Information

COL2 Space:	20K SQF
Total Columbus Campus:	200K+ SQF total (8 acres)
Building Info:	Completed 2012, 1 floor with disaster recovery mezzanine; reinforced concrete & steel with dual roof system, seismic zone 1
Floor Type:	24" anti-static raised floor
Space Configuration:	Custom cabinets & cages
Loading Capacity:	1,500 lbs/SQF with dedicated, sunken loading deck

Security

Accreditations:	Uptime Tier III certified, SOC 1 & SOC2 Type 2 audited
Closed-Circuit TV:	Yes, 90 day archival
Onsite Security:	24/7
Customized Security:	Yes, per client requirements
Access:	Biometric, PIN code & badge
Man Traps:	Yes

Environmental Controls

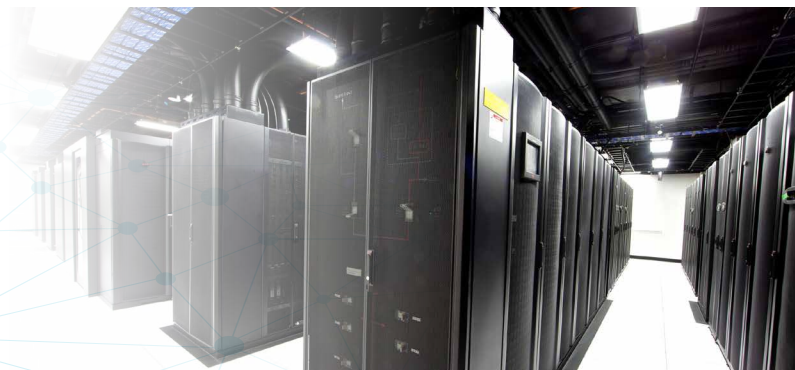
Cooling Type:	Chilled water/cooling towers, raised floor cold air plenum supply
Redundancy:	2N towers & chillers
Humidification:	Yes, centralized
Fire Protection:	Multi-zone
Fire Suppression:	Pre-action systems, multi-stage, zoned & localized dry pipe
Remotely Monitored:	Yes

Power

Entrances:	2N diverse feeds
UPS:	Emerson Network Power NX UPS systems
Load Design:	5 kW per cabinet
Battery Monitoring:	Canara intelligent battery monitoring
ATS:	Yes
Battery Redundancy:	Yes, generators with 72 hours of fuel autonomy onsite, 70K gallon refueling tanks
Utility Power:	30 MW+ utility available on campus

Connectivity

Meet-Me-Room (MMR):	Yes, Cologix controlled
Number of Networks:	50+ unique network providers
Network Neutral:	Yes
Fiber Entrance:	16+
Cross Connects:	Copper, fiber, virtual
Metro Connect:	Dark fiber available
Internet Exchange:	Yes, access to Ohio-IX
Communications:	Internet bandwidth services available



Customer Support

24/7 local engineers, support teams, NOC,
Cologix Command DCIM
Self-service online customer care portal
Onsite master electrician

WWW.COLOGIX.COM
L19V3-COL2