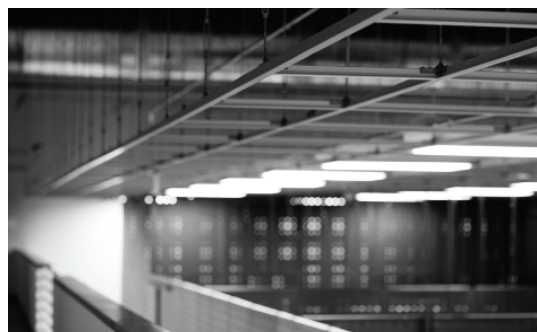


NYM7

**New York Metro - Wappingers Falls
CyrusOne Data Center
155 Myers Corners Rd
Wappingers Falls, NY 12590**

The **NYM7** data center, located north of New York City and close to I-84, Route 9, and the Metro North Railroad Station, supports the mission-critical, synchronous data replication requirements of numerous businesses along the east coast and New York Metro region.

The 100,000 square-foot facility offers 37,000 square feet of raised white floor, up to 10 MW of power, and 25,000 square feet of work area recovery space. It has redundant power and cooling infrastructure to ensure no single point of failure and state-of-the-art security including 24/7 year round security staffing.



Overview

- 100,000 square feet facility
- 37,000 square feet data center space
- 25,000 square feet work area recovery space featuring dedicated office suites configured per customer requirements
- Carrier-neutral facility with two diverse telco paths that provides dual access to multiple providers for flexible connectivity
- Building and all critical equipment are above 500-year flood zone
- SSAE 18 and PCI compliant

Power

- Designed to deliver 99.999% availability
- 10MW of power
- Designed to support high density configurations
- Two separate feeds from the utility company
- Full N+1 and 2N redundancy
- 2N uninterruptible power supply units
- N+1 generator backup

Cooling

- 2,600 Tons of N+1 cooling capacity

Security

- 24/7 year round video surveillance to monitor and control access within the facility
- Biometric access readers
- Advanced proximity card readers
- Motion sensors
- Surrounding security corridor
- Central security office monitors all systems
- 24/7 year round bonded security staff

Fire Protection

- Double-interlocking pre-action sprinkler in computer rooms and electrical rooms. Wet pipe in office and storage areas

Location/Amenities

- Strategically located 61 miles north of Wall Street in Dutchess County, NY
- Close to I-84, Rt. 9 and the MetroNorth RR Station

Certification/ Audit Compliance Accreditations

Through disciplined assessment and audit processes, CyrusOne has implemented comprehensive practices for:

- ISO/IEC 27001
- PCI DSS
- HIPAA/HITECH
- FISMA-High
- SSAE 18 (SOC 1 Type II), Type 2 AT 101/SOC 2
- Business Continuity and Disaster Recovery (BCDR)

Site Plan

