

# CIN2

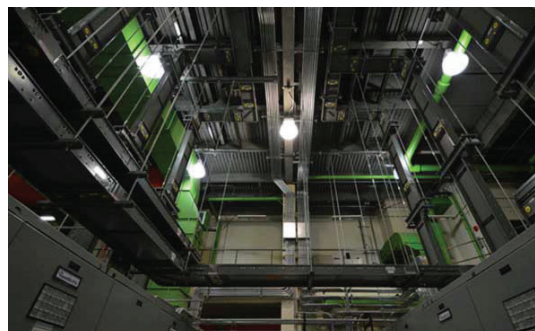
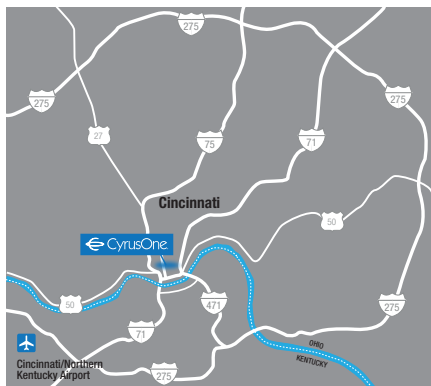
## 7th Street

**CyrusOne Data Center**  
**Cincinnati**  
**229 W 7th Street**  
**Cincinnati, OH 45202**

CyrusOne's downtown Cincinnati data center facility is used for production colocation, back-up and recovery and business continuity.

The data center is conveniently located 15 minutes from Greater Cincinnati and the Northern Kentucky International Airport.

With CyrusOne's National IX, customers can configure a virtual on-net platform from a multitude of carriers and providers, allowing optimal flexibility and interconnection with anyone at any connected facility and to the cloud – at no additional cost.



## Overview

- 400,000 sq. ft. data center/ 212,000 sq. ft. raised floor
- Comprised of a structural frame of reinforced concrete, with concrete floor slabs, and metal deck roof
- Exterior walls are masonry cavity wall system with 8" concrete block back-up, spandrel to spandrel with 12" square brick masonry veneer
- Cincinnati's primary carrier hotel facility and on FEMA priority list
- Six – 13.2 kV feeders, with diverse routing feeding six – 2500 kVa fluid cooled transformers
- Eight – End fed Main Switchboards in Spot Network configuration
- 40,000 gallon fuel capacity (2-20K gallon tanks)
- 24/7 year-round onsite NOCC and technician support available
- Closed loop chilled water cooling with redundant feeds for makeup water

## Power

- 12MW of critical capacity
- Multiple levels of redundancy available within same footprint (e.g. N, 2N)
- Six – 13.2 kV feeders, with diverse routing feeding six – 2500 kVa fluid cooled transformers
- Eight – End fed Main Switchboards in Spot Network
- Scalable 2 MW Cummins dedicated generators
- 40,000 gallon fuel capacity (2 - 20K gallon tanks)

## Cooling

- 24 or 36-inch raised floor design
- Highly efficient multiple 1200 ton York Centrifugal chillers
- Multiple 115-ton Huntair ACU with electronically commutated (EC) variable-speed fans; other levels/halls utilize 30 and 40 ton CRAC units
- Closed loop chilled water cooling with redundant feeds for makeup water

## Security

- Reinforced physical structure including concrete bollards
- Video surveillance and recording of the exterior and interior of each facility
- On-site security guards 24 hours a day, 365 days a year
- 24/7 year round staffed NOCC and remote hands support
- Man traps, revolving entrance doors; key card security for rigid access control
- Cabinet and cage security options include individual locks and biometric scanners

## Fire Protection

- Very Early Smoke Detection Apparatus (VESDA) system; sampling air in parts per million coupled with a zonal dual-action interlocking dry-pipe system
- FM200 or FE-25 clean gas suppression in a full flood deployment

## Location/Amenities

- 15 Minute drive to Greater Cincinnati/ Northern Kentucky International Airport
- Major Metropolitan Downtown; 10 National Chain Hotels within four blocks.

## Certification/ Audit Compliance Accreditations

Through disciplined assessment and audit processes, CyrusOne has implemented comprehensive practices for:

- ISO
- HIPAA/HITECH
- HIGHTRUST CSF
- CSA STAR
- SSAE 18 (SOC 1 Type II), Type 2 AT 101/SOC 2
- PCI
- FISMA-High
- FFIEC

## Site Plan

