

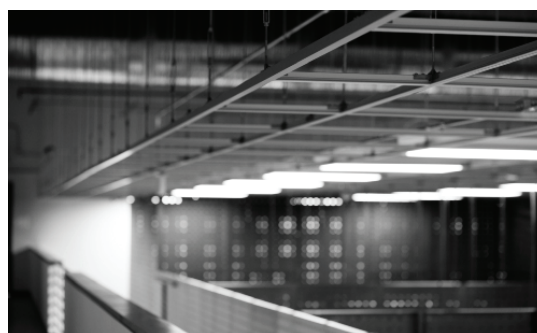
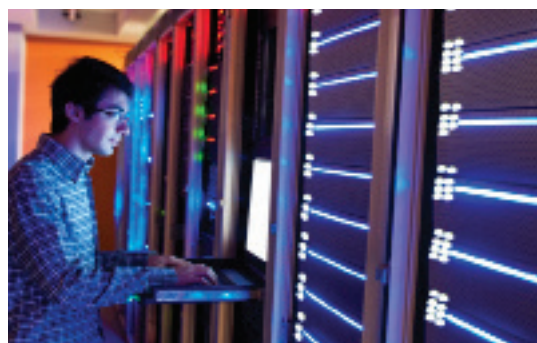
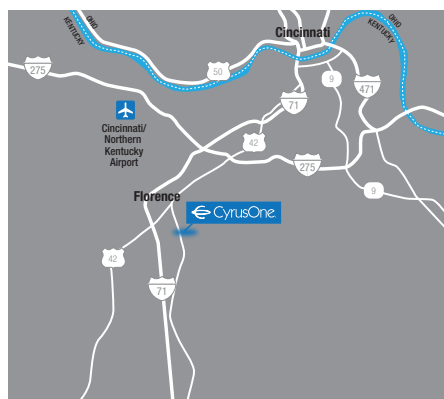
CIN6

CyrusOne Data Center
Cincinnati - Florence
7190-7200 Industrial Road
Florence, KY 41042

With close access to downtown Cincinnati and the greater Cincinnati airport, CyrusOne's 143,000 square foot Florence, Kentucky data center is a great location to support High Performance Computing (HPC) environments, production colocation, back-up and recovery and business continuity.

This data center facility has multiple levels of redundancy available within the same footprint (N, N+1). The site is setup with both water cooled and air cooled chillers for continued redundancy structure.

With 24/7 year round security onsite, video surveillance of exterior and interior of facility, and rigid access control your mission critical environment is safe and secure.



Overview

- 143,000 sq. ft. data center / 55,000 sq. ft. white space available
- SSAE 18 (SOC I type II), PCI DSS (sec 9 & 12), HIPAA, ISO 27001, FISMA
- Multiple levels of redundancy available within same footprint
- 36-inch raised floor design
- N+1 cooling configuration

Building

- 143,000 square feet

Power

- Can accommodate 4MW of critical capacity
- 75w per square foot
- N+1 redundancy
- Diverse power delivered by two independent utility sources
- 4 x 750kVA and 6 x 1000kVA UPS systems; each power system has a dedicated UPS with battery backup
- 5 x 1.5kW diesel generators; 2 x 2.0 diesel generators and 1 x 1.75kW generator
- 550-gallon dedicated day tank for each generator
- 2 x 8000-gallon and 2 x 10,000-gallon capacity main fuel storage tanks

Cooling

- 36-inch raised data hall floor design
- Return plenum ceilings utilizing 30, 40, and 60 ton CRAH units
- 2 x efficient 1000-ton Carrier water-cooled centrifugal chillers; 7 x 250-ton air-cooled chillers; 1 x 500-ton Carrier air-cooled chiller
- Open-loop chilled water cooling design with closed-loop water cooled back-up

Security

- Video surveillance and recording of the exterior and interior
- On-site security guards 24/7 year-round
- Dual authentication entry into building and data halls; biometric and key-card (color-coded) security for rigid access control
- Cabinet and cage security options include individual locks and electronic biometric badge readers
- Perimeter fence

Fire Protection

- Very Early Smoke Detection Apparatus (VESDA) system; dual action interlocking dry-pipe pre-action system; below-floor FE-25 fire suppression with 2-zone activation
- Third party fire panel monitoring

Location/Amenities

- 45,000 square feet+ office space, common areas, break rooms with kitchenette & vending
- 10 miles from CVG, Cincinnati/Northern Kentucky International Airport

Certification/ Audit Compliance Accreditations

Through disciplined assessment and audit processes, CyrusOne has implemented comprehensive practices for:

- ISO/IEC 27001
- PCI DSS
- HIPAA/HITECH
- FISMA-High
- SSAE 18 (SOC 1 Type II), Type 2 AT 101/SOC 2
- Business Continuity and Disaster Recovery (BCDR)

Site Plan

