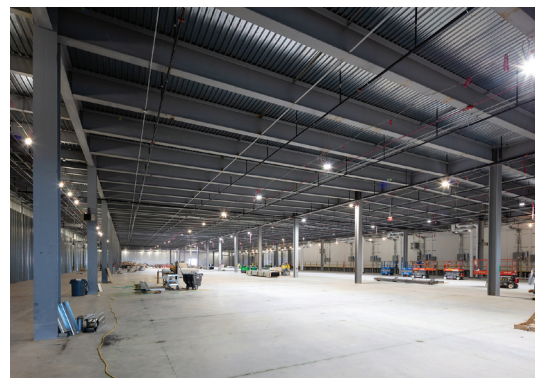
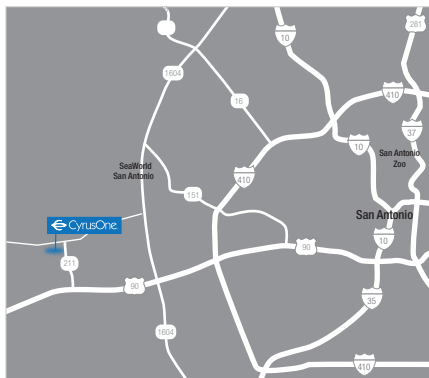


SAT5

San Antonio
CyrusOne Data Centers
14719 Omicron Dr.
San Antonio, TX
78245

CyrusOne **SAT5** is the newest state-of-the-art, purpose-built data center in the Texas region adding an additional 18 MW to the city's 63 MW total. This campus has 50,000 square feet of raised space per floor and provides connection to the San Antonio Metro IX and CyrusOne National IX with on-ramps to major cloud providers through Megaport.

The San Antonio data center is well-suited for enterprise clients that require a robust data center infrastructure for mission-critical applications. This location is in an area considered one of the safest in the country, free from natural disasters including seismic activity, tornados and hurricanes. San Antonio V also offers Class A office space as well as CyrusOne's seven layers of physical security.



Overview

- Building 1 is 175,000 GSF, two story, one data hall per floor with 50,000 SF of raised floor. Each data hall can support 9MW.
- This campus is design for 3 buildings, each of them being two stories with capacity for 18MW
- ISO/IEC 27001, PCI DSS, HIPAA/HITECH, FISMA-High, SSAE 18 (SOC 1 Type II), Type 2 AT 101/SOC 2, HITRUST, FFIEC, CSA STAR, Business Continuity and Disaster Recovery (BCDR), and TRUSTe compliant.
- Designed to meet TIA 942 Rated 4 requirements for electrical and mechanical
- Carrier-neutral
- 100% SLA

SAT5 Technical Specifications

Power

- Utility Capacity – 18 MW
- Utility Voltage – 34.5 kV
- UPS configuration & capacity – Distributed Redundant electrical topology with 1500KVA UPS
- Generator Power – (16) 2250KVA Generators for critical infrastructure support

Cooling

- Capacity for 18MW Critical IT
- (8) 500-Ton chillers with CRAH units supporting each data hall
- Roof Top Units will provide dehumidification.

Security

- Reinforced precast concrete structure surrounding critical Data Halls
- On-site security guards
- Key card and biometric access control, secure access turnstile, surveillance cameras

Building

- 175,000 GSF Two story, steel structure with tilt-up concrete wall panels. Single loading dock with a Class C-1 Freight Elevator
- TPO roofing system. Data Halls are 1hr fire rated
- UPS Containers house critical infrastructure for each data hall.

Connectivity

- Carrier Neutral and part of the CyrusOne IX Exchange

Energy Efficiency

- Ultra Low PUE through the use of a closed loop chilled water system

Fire Detection and Suppression

- VESDA with fully sprinklered, double interlocking system (use similar verbiage as other C1 data halls)
- Zonal dual-action interlocking dry-pipe pre-action system

Certification/ Audit Compliance Accreditations

Through disciplined assessment and audit processes, CyrusOne has implemented comprehensive practices for:

- ISO/IEC 27001
- HIPAA/HITECH
- SOC 1 (SSAE)
- HITRUST
- CSA STAR
- Business Continuity Management System (BCDR) TRUSTe
- PCI DSS
- FISMA-High
- SOC 2 (SSAE)
- FFIEC
- ISO 22301

Site Plan

