

# Datum | BUSINESS CLASS DATA CENTRES



# Datum

- What are we?
  - A Colocation Business and Datacentre Operator
- What's our plan?
  - A network of **regional**, environmentally intelligent, **carrier neutral colocation** datacentres delivering for our clients the most energy **efficient colocation** on the market with a focus and **passion** for outstanding **client service**
- Why?
  - Much of the UK Datacentre estate is legacy, inefficient and of mixed quality. We aim to create a network of “**Kite Mark**” quality facilities utilizing proven technology to deliver **efficient, secure** and **service based** Colocation and Datacentre services

# Corporate Profile

---

- Privately owned
- Backed by Darwin Private Equity
- Fully funded
- 15 Years experience in Colocation
- First facility open – Farnborough
- First clients live

# About Us

- Environmentally Intelligent
  - Datacentres designed to maximise energy efficiency using proven, cost effective, cooling technology to reduce carbon footprint and costs
- Secure & Resilient
  - Highly available infrastructure, 2N main and backup power delivered from secure facilities on high security campus locations, backed by a 100% SLA
- 100% Client Focused
  - Proactive service delivery, service reporting and account management. Your IT needs and our first class service in perfect alignment

# Introducing the Farnborough Datacentre

- On the high security QinetiQ Cody Technology Park
- Defence Industry heritage, exceptional building quality
- Park focuses on high technology businesses in both public and private sector
- ListX capability
- IL status achievable
- Excellent transport links and services – close to M3 motorway, bus and rail links to London
- Range of onsite facilities including conference rooms and theatres, café, restaurant, gym and client use offices






# Accreditations and Certifications

- Currently preparing for BS ISO / IEC 20000, 27000, 14000, 9000, 50001 and PCI DSS
- Datacentres built to comply with existing and proposed certifications for security, continuity and environmental standards.
- Datacentres located specifically to address the needs of clients with greater levels of physical security requirements
- First client will use Datacentre as primary site for public sector clients, including those processing protectively marked data and services forming part of the Critical National Infrastructure.
- Facility and location will satisfy the needs of both departmental and pan-government accreditors



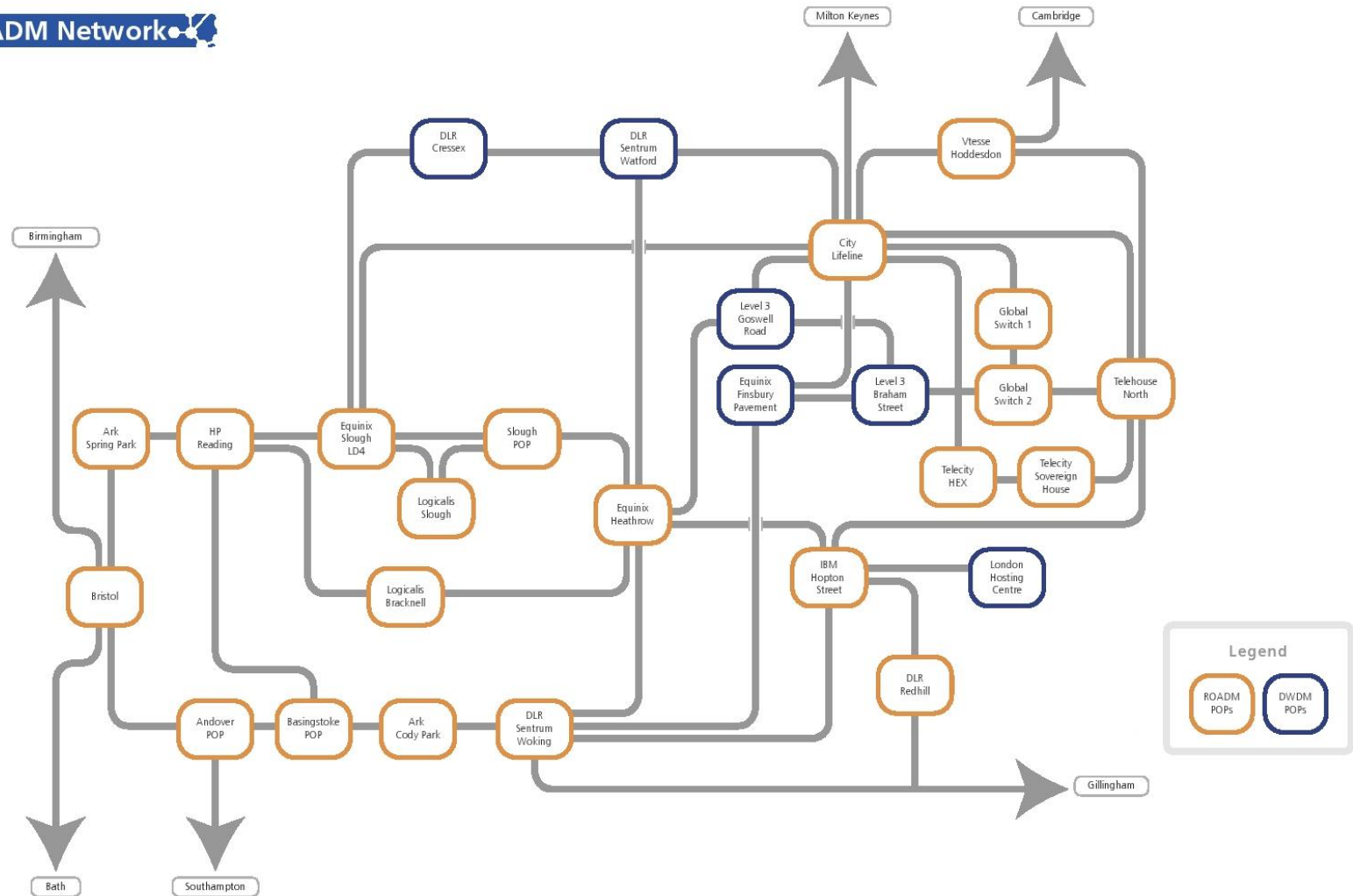
# Connectivity

---

- Managed IP Transit Connectivity Service
  - WAN connectivity to other connectivity Hubs
  - Carriers
    - BT/Level3/GC 
    - Cable & Wireless 
    - Vtesse 
    - Geo
    - SSE
    - Colt
    - Virgin
- } On/near site

# Connectivity – Vtesse RoADM Network

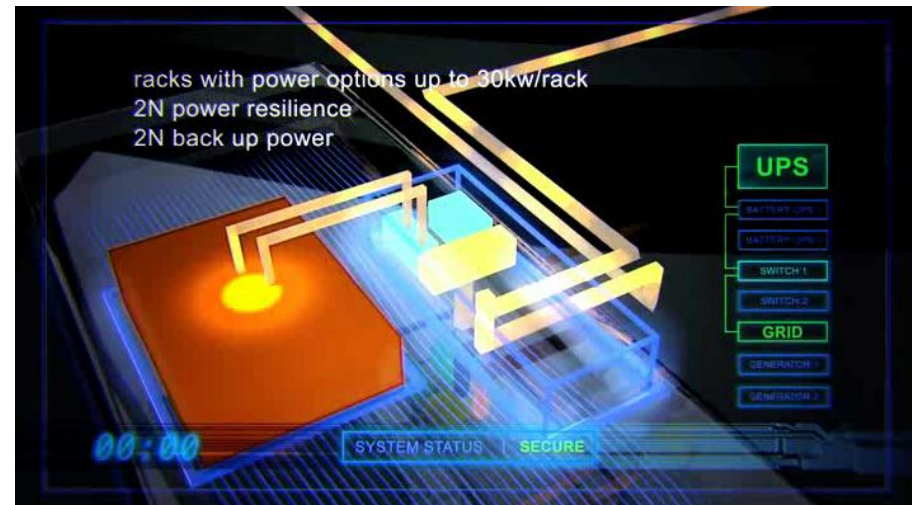
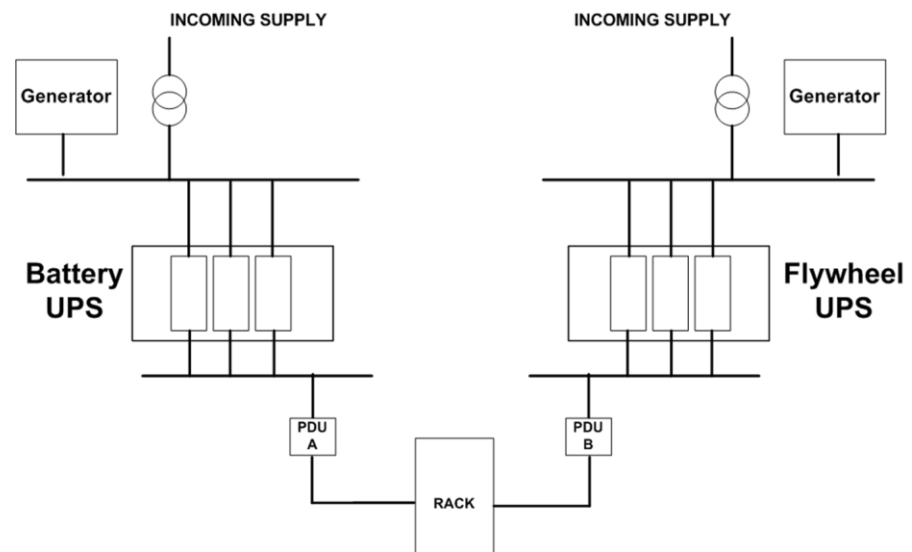
## ROADM Network



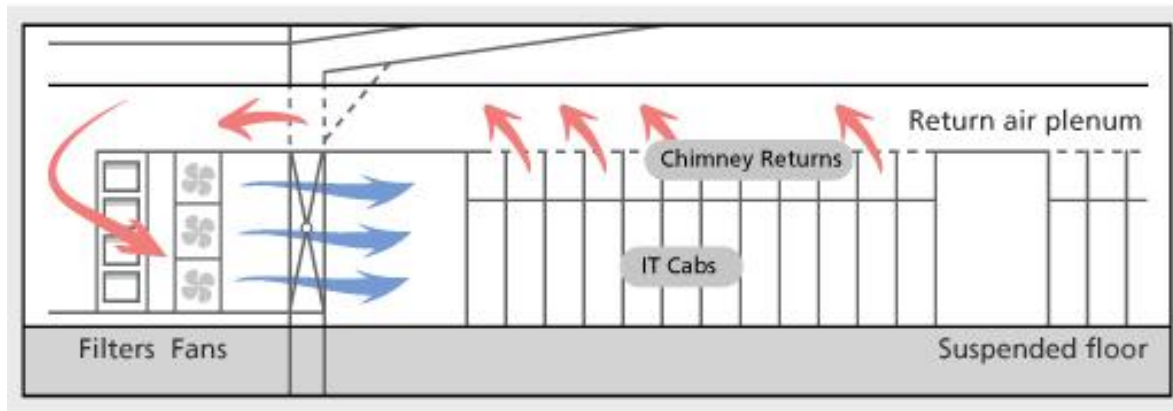


# Power

- Dual 6 MVA incoming
  - 2N onsite generation
  - 2N UPS systems
  - 72 hours on site fuel supply
- 
- Up to 30 kW per rack
  - Colour coded power feeds
  - Concurrently maintainable throughout



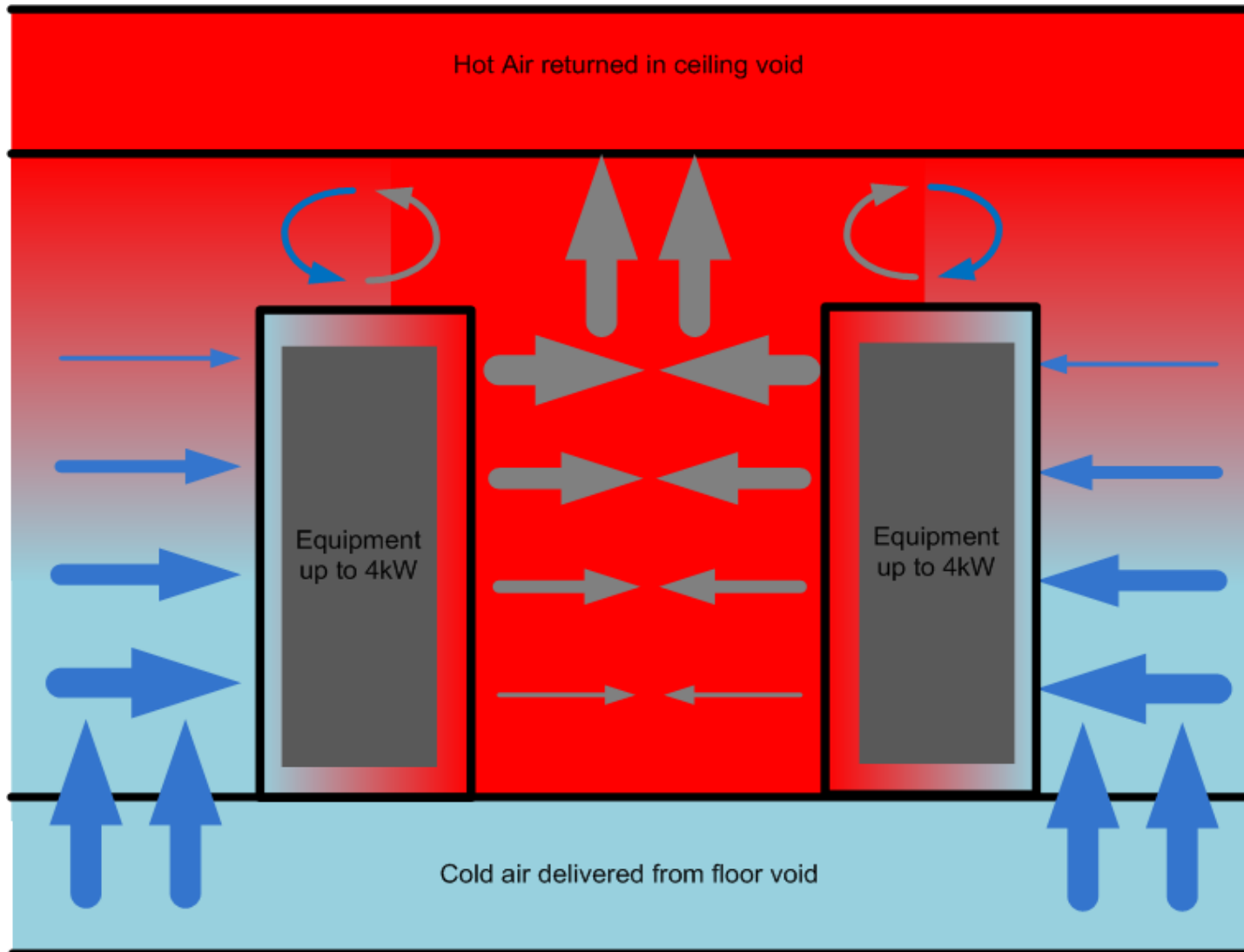
# Cooling - Flooded Airflow Adiabatic Cooling



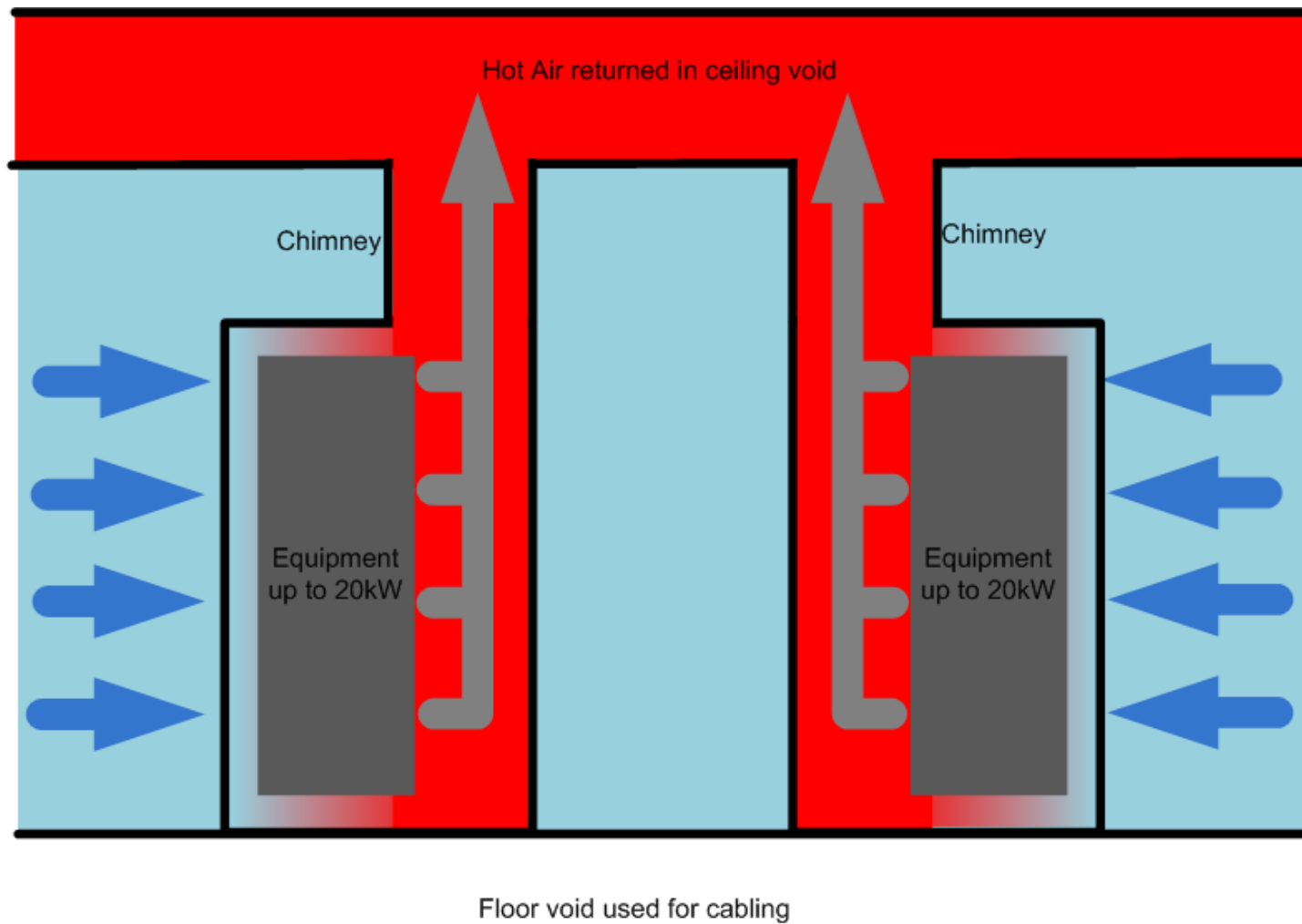
© Datum Datacentres Ltd 2012

- Environmentally Intelligent and Efficient
- Separation of Hot and Cold aisles
- No water services within technical space
- Up to 30 kW per rack
- Industry leading PUE of 1.2 and better achievable even at partial load

# Cooling – Conventional Arrangement

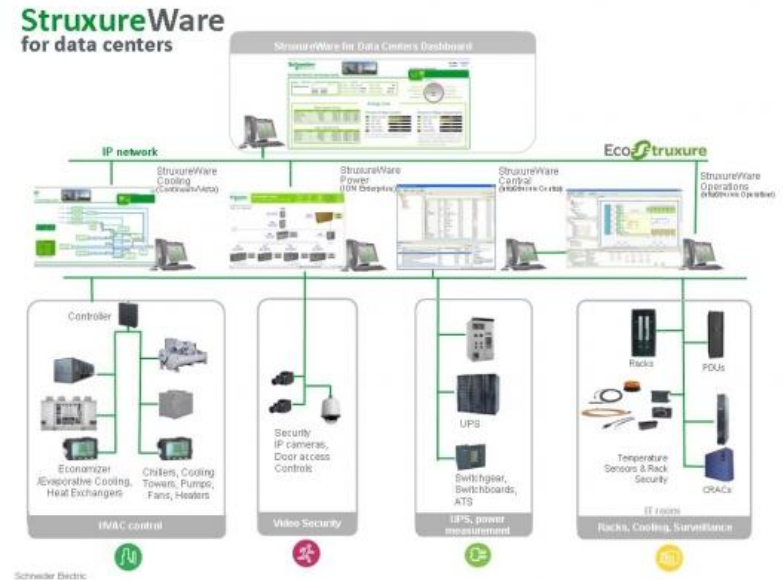


# Cooling - Datum Arrangement



# Client focus

- Service focus, not “landlord tenant”
- Proactive service delivery
- Detailed service reporting
- Service management resource
- Client portal
- Extensive non DC facilities



- Advanced Schneider StruxureWare Data Centre Infrastructure Management solution (DCIM)
- Monitoring and reporting tools to provide clients with information required to improve efficiency
- Predictive scenario modelling to ensure optimum set up of client infrastructure
- Powerful management tool for Datum infrastructure

# Security & Fire Protection

---

- Multi Layered approach (QinetiQ and Datum)
- Photo ID and Pre Notification
- 24 x 7 Security
- Multi factor access control including Biometrics
- Full perimeter surveillance and recording of both Cody Technology Park and Facility
- Intrusion Detection and Alarm Systems
- VESDA – Double Knock
- Fire extinguishant throughout

# Datacentre Services

---

- Remote Hands
- Scheduled and emergency engineering services
- Structured Cabling
- Hardware Procurement & Deployment
- Consultancy and Auditing
- DCIM – additional performance modules
- Office/Conference Services
- Build and Storage Space
- Recycling



# Summary

- Environmentally Intelligent
  - Datacentres designed to maximise energy efficiency using proven, cost effective, cooling technology to reduce carbon footprint and costs
- Secure & Resilient
  - Highly available infrastructure, 2N main and backup power delivered from secure facilities on high security campus locations, backed by a 100% SLA
- 100% Client Focused
  - Proactive service delivery, service reporting and account management. Your IT needs and our first class service in perfect alignment