



EQUINIX

Data Center Technical Specifications

MI2

Miami IBX® Data Center

Equinix Miami Data Centers

Equinix is the world's digital infrastructure company™. Digital leaders harness our trusted platform to bring together and interconnect the foundational infrastructure that powers their success. Our Miami International Business Exchange™ (IBX) data centers are in the heart of one of the world's largest internet exchange points and serve as major communications gateways to commercial centers in Latin America, the Northeastern U.S. and Europe. The MI1 data center is located in downtown Miami and hosts a broad choice of networks and other interconnection partners.

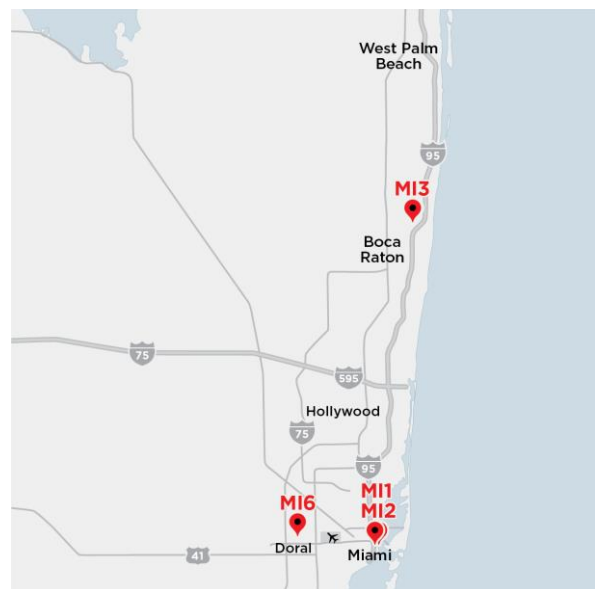
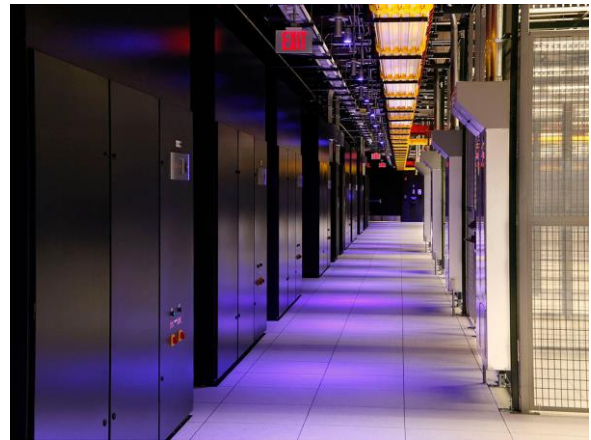
Miami is ranked one of the top five most connected cities in the world and is a key destination point for submarine cable systems, which means it offers superior interconnection and secure routes to global markets. Our facilities provide access to leading Latin American networks, reducing latency to the South and Central American markets. Miami is a growing metro, boasting a highly diverse economy and attracting huge concentrations of commerce, finance, tourism, media and healthcare businesses.

Miami Data Centers Benefits

- Lowest latency route to Brazil via GlobeNet, a submarine telecommunications cable system linking the U.S., Bermuda, Venezuela and Brazil
- Direct access to and from Brazilian markets through the Monet subsea system via a cable landing station located inside MI3
- A pathway, through MI1, for data traffic from the Caribbean and South and Central America to more than 148 countries worldwide
- MI1 built 32 feet above sea level and designed to withstand Category 5 hurricane-level winds

36 NE Second Street
Miami, FL 33132

+1.866.378.4649 (Customer Support)
+1.888.342.8890 (Sales)
support@equinix.com



[Click here](#) to view the metro interconnection map.



Building

Space	
Colocation Space	10,945 ft ² (1,017 m ²)
Building Type	7-story, steel/concrete structure, brick face
Parking	Adjacent to building (for fee)
Floor Type	Slab
Floor Load Capacity	150 psf (7.18 kN/m ²)
Flood Zone	
Flood Plain Info	Zone X
Seismic Rate	
Seismic Design Category	0
Fire Protection	
Fire Suppression	Double-interlocked, pre-action (dry pipe)

Facilities

Power and Cooling	
Cabinet Density	2.4 - 3.0 kVA per cabinet
Power Distribution	120V/208V
Utility Feeders	2
UPS Configuration	Parallel redundant
UPS Redundancy	N+1
Standby Power Configuration	2 x 1,000 kW diesel generators
Standby Power Redundancy	N+1
Cooling Configuration	Direct Expansion TVX CRAC units
Cooling Redundancy	N+1
Security	
Physical	Man trap entry
Human	Remotely managed via the Equinix Operations Center
Electronic	PIN and card readers, CCTV surveillance with 90-day retention, motion detection

Amenities

- Break Room
- Loaner Tools
- Crash Carts
- Work Kiosks
- Wifi
- Conference Room
- Showers

Products and Services

Data Center

- Private Cage
- Secure Cabinet
- AC Power Circuits
- DC Power Circuits
- Equinix Flex Space
- Antenna

Interconnection

- Equinix Fabric®
- Equinix Internet Exchange®
- Cross Connects
- Equinix Internet Access
- Metro Connect®
- Fiber Connect

Digital Infrastructure

- Equinix Metal®
- Network Edge
- Equinix Precision Time®

Services

- [Smart Hands®](#)
- Equinix Smart View
- Equinix Smart Build

Find the latest product availability on [Equinix Marketplace](#)

Reliability

Our IBX data centers boast an industry-leading, high average uptime track record of >99.9999% globally.

Certification and Sustainability

Certifications

- HECVAT
- HIPAA
- ISO 22301
- ISO 27001
- NIST 800-53/FISMA High
- PCI DSS
- SOC 1 Type II
- SOC 2 Type II

Sustainability

- Renewable Energy Coverage: 100% from RECs from U.S. wind VPPAs and Green-e wind RECs

About Equinix

Equinix (Nasdaq: EQIX) is the world's digital infrastructure company.® Digital leaders harness Equinix's trusted platform to bring together and interconnect foundational infrastructure at software speed. Equinix enables organizations to access all the right places, partners and possibilities to scale with agility, speed the launch of digital services, deliver world-class experiences and multiply their value, while supporting their sustainability goals.