



EQUINIX

Data Center Technical Specifications

CH7

Chicago IBX® Data Center

Equinix Chicago Data Centers

Equinix is the world's digital infrastructure company™. Digital leaders harness our trusted platform to bring together and interconnect the foundational infrastructure that powers their success. Our Chicago data centers are business hubs for 895+ companies. Our customers here can choose from a broad range of network services from 195+ providers. They can also interconnect directly to customers and partners in their digital supply chain.

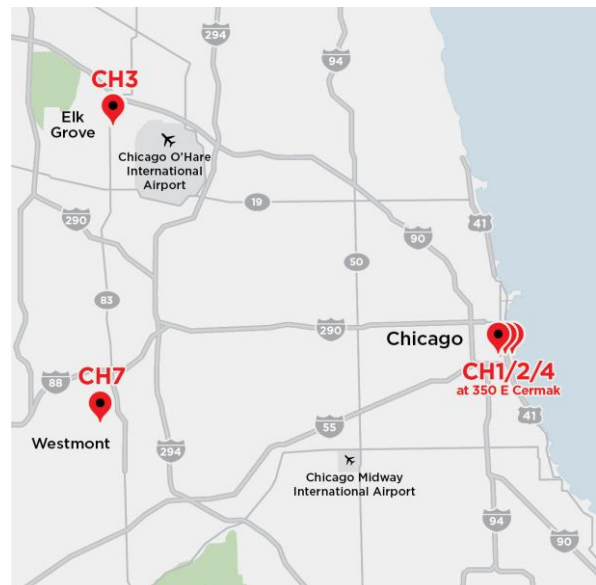
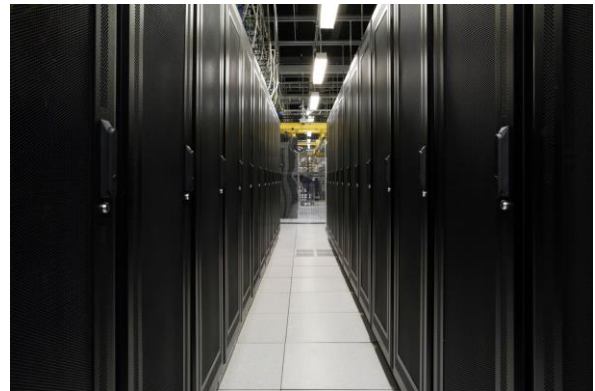
Chicago is one of the world's top global financial centers and home to three major financial and futures exchanges: the Chicago Stock Exchange, the Chicago Board Options Exchange and the Chicago Mercantile Exchange. Our strong relationships with these exchanges have helped make Equinix the preferred colocation center for financial services firms. Banks, trading exchanges, brokers, traders, clearinghouse merchants, market data suppliers and proprietary software vendors all interconnect on Platform Equinix®

Chicago Data Centers Benefits

- Proximity to one of the top ten global financial centers and the headquarters of many multinational corporations
- Dense concentrations of financial services companies, cloud service providers, content providers, IT service providers and enterprises
- Access a large number of CDNs
- Strong peering and network base to facilitate reliable content delivery to end user
- Strategic Midwest location ideal for business continuity and disaster recovery operations

111 Plaza Drive
Westmont, IL 60559

+1.866.378.4649 (Customer Support)
+1.888.342.8890 (Sales)
support@equinix.com



[Click here](#) to view the metro interconnection map.



Building

Space	
Colocation Space	29,287 ft ² (2,721 m ²)
Building Type	1-story, reinforced concrete building with concrete block construction
Parking	Adjacent to building (no charge)
Floor Type	Raised
Floor Load Capacity	250 psf (11.97 kN/m ²)
Flood Zone	
Flood Plain Info	Zone X (unshaded) = IBX elevation above the 500-year Base Flood Elevation
Fire Protection	
Fire Suppression	Aspirated (VESDA/VEWFD) & non-aspirated (duct/ceiling-mount)/double-interlocked pre-action (dry pipe)

Facilities

Power and Cooling	
Cabinet Density	2.4 kVA per cabinet
Power Distribution	120/208V
UPS Configuration	2N with ASTS (automatic static transfer switch)
UPS Redundancy	2N
Standby Power Configuration	2 x 2,000 kW diesel generators
Standby Power Redundancy	2N
Cooling Configuration	Water-cooled chillers, CRAHs
Cooling Redundancy	N+2
Security	
Physical	Physical security monitoring and centralized control with the latest systems available. Valid ID and access authority required
Human	24/7 on-site security officers
Electronic	Proximity access card, CCTV surveillance with 90-day video retention

Amenities

- Break Room
- Work Kiosks
- Wifi
- Conference Room

Products and Services

Data Center

- Private Cage
- Secure Cabinet
- Secure Cabinet Express
- AC Power Circuits
- DC Power Circuits
- Antenna

Interconnection

- Equinix Fabric®
- Equinix Internet Exchange®
- Cross Connects
- Equinix Internet Access
- Metro Connect®

Digital Infrastructure

- Equinix Metal®
- Network Edge
- Equinix Precision Time®

Services

- [Smart Hands®](#)
- Equinix Smart View
- Equinix Smart Build

Find the latest product availability on [Equinix Marketplace](#)

Reliability

Our IBX data centers boast an industry-leading, high average uptime track record of >99.9999% globally.

Certification and Sustainability

Certifications

- HECVAT
- HIPAA
- ISO 22301
- ISO 27001
- ISO 50001
- NIST 800-53/FISMA High
- PCI DSS
- SOC 1 Type II
- SOC 2 Type II

Sustainability

- Certifications: ISO 50001:2018
- Renewable Energy Coverage: 100% from RECs from U.S. wind VPPAs and Green-e wind RECs

About Equinix

Equinix (Nasdaq: EQIX) is the world's digital infrastructure company.® Digital leaders harness Equinix's trusted platform to bring together and interconnect foundational infrastructure at software speed. Equinix enables organizations to access all the right places, partners and possibilities to scale with agility, speed the launch of digital services, deliver world-class experiences and multiply their value, while supporting their sustainability goals.