



NEXT DC

A1 ADELAIDE DATA CENTRE

Build connections, realise your potential
and succeed in a thriving digital economy



DIGITAL INFRASTRUCTURE DESIGNED TO ACCELERATE BUSINESS

Adelaide, get ready to experience the power of A1 - NEXTDC's newest, world-class data centre. A1 Adelaide still in development, will be the first Uptime Institute Tier IV certified data centre facility in South Australia. A1 Adelaide is designed to meet the growing digital infrastructure footprint in South Australia and is set to become the leading data centre solution for enterprise and government customers in this region.

With its strategic CBD location, A1 Adelaide will offer high density and diverse connectivity to the South Australian digital economy, in addition to emerging innovation with custom designed mission-critical workspaces.

South Australia's first fault tolerant, Uptime Institute Tier IV certified data centre facility. Located at 211 Pirie Street, A1 will deliver 5MW of critical power and cloud interconnection capability, as well as mission critical spaces (MCX), providing highly reliable and customisable workspaces that are designed to host essential personnel in supporting mission critical operations.

NEXTDC is globally recognised for the design, construction, and operation of Australia's only network of Uptime Institute certified Tier IV facilities.



A1 Adelaide

121 Frome Street
Adelaide SA 5000



B1 Brisbane

20 Wharf Street
Brisbane City QLD 4000



B2 Brisbane

454 St Pauls Terrace
Fortitude Valley QLD 4006



C1 Canberra

19 Battye Street
Bruce ACT 2617



D1 Darwin

2 Harvey Street
Darwin NT 0800



M1 Melbourne

826 Lorimer Street
Port Melbourne VIC 3207



M2 Melbourne

75 Sharps Road
Tullamarine VIC 3043

A1 ADELAIDE

FEATURES



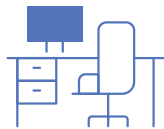
Central,
CBD location



100% uptime,
completely fault tolerant



100% carbon
neutral solutions



Mission critical
operations space



Self-service and
infrastructure management



High performance
cloud connectivity

SPECIFICATIONS



Target IT capacity

5MW



Technical space

2,922m²



Land area

~1570m²



Data halls

3



Rack capacity

1,470 (approximately)



**Development
commencement**

FY23



M3 Melbourne

25 Indwe Street
West Footscray VIC 3012



P1 Perth

4 Millrose Drive
Malaga WA 6090



P2 Perth

11 Newcastle Street
Perth WA 6000



S1 Sydney

4 Eden Park Drive
Macquarie Park NSW 2113



S2 Sydney

6-8 Giffnock Avenue
Macquarie Park NSW 2113

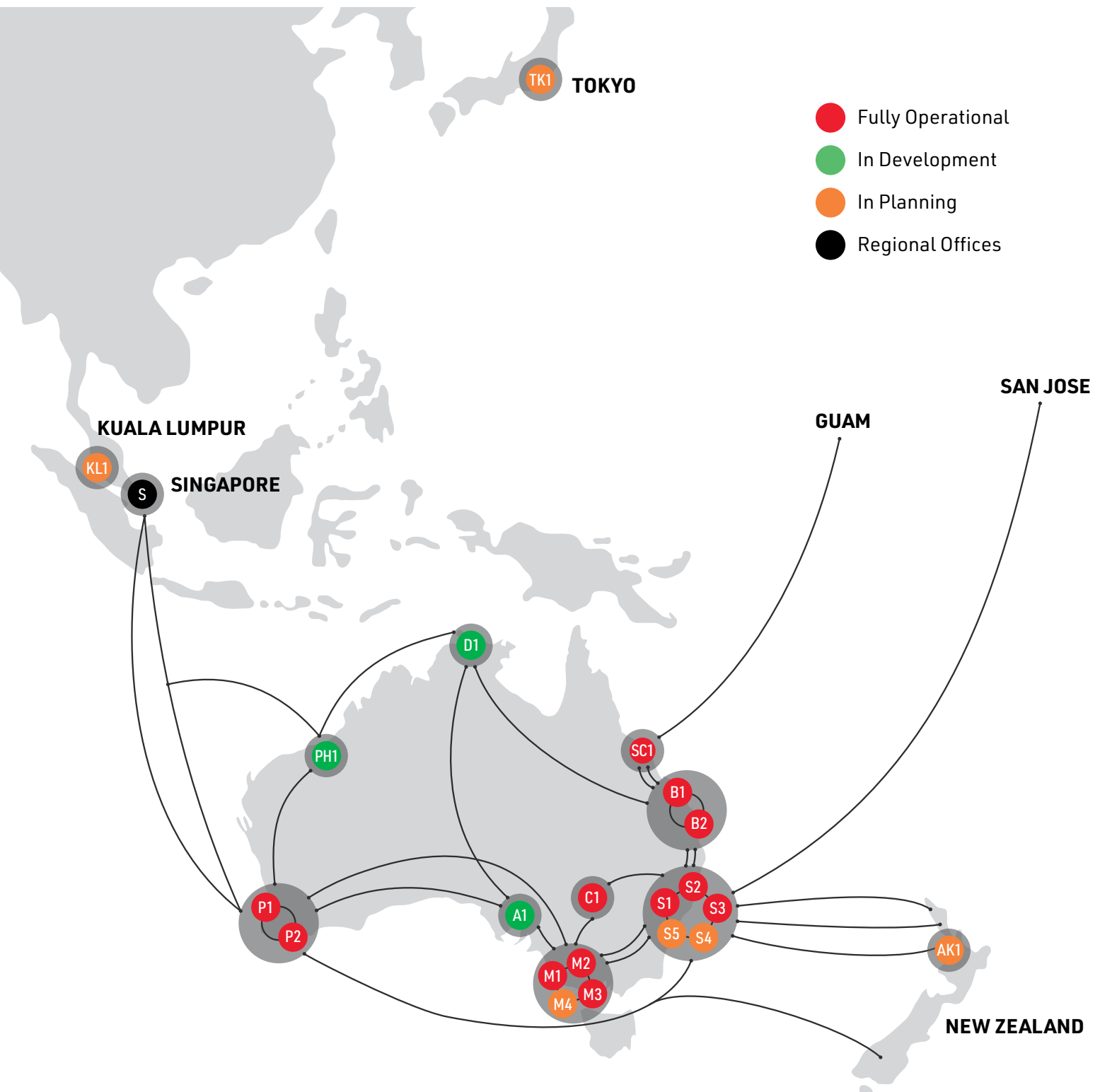


S3 Sydney

2 Broadcast Way
Artamon NSW 2064

CONNECTING TECHNOLOGY TO YOUR BUSINESS

NEXTDC enables organisations to position their critical infrastructure in the epicentre of their digital services supply chain. Our digital infrastructure platform enables direct, secure and native access to cloud, with the advantage of proximity. The power of proximity and speed delivers organisations the agility, performance, and customer experience advantages needed to increase their competitive edge.





NEXTDC's infrastructure platform delivers the security, sovereignty and interconnectivity capability your businesses requires. Our premium solutions empower the underlying capability you need to grow and scale without friction or limitation and accelerate the momentum of data traction.

Find out how NEXTDC can help you enhance the reliability and efficiency of your digital infrastructure, so you stay focussed on driving growth and creating value for your customers.



N E X T D C where the cloud lives™

13 NEXT sales@nextdc.com www.nextdc.com