



UNITED STATES

Silicon Valley SV1 Data Center

Located in Silicon Valley, a global center of technology and innovation, SV1 is a 16MW data center and is the first in Santa Clara to use an **earthquake-resistant design** featuring a unique base isolation system.

Data center space

- 64,090 sq. ft. data floor space
- One 6MW and two 5MW vaults
- Four-story building
- Class A office space available
- Base isolation system proven to protect people and critical infrastructure during earthquakes

Power

- Total critical IT load: 16MW
- N+1 redundancy supplied by two separate electrical systems
- Each lineup in the electrical system is capable of providing 2MW of UPS conditioned power via two parallel 1MW Mitsubishi UPS units
- Two (2) x 60kV utility service feeds into the NTT-owned 12kV substation
- Power densities available up to 22kW per rack
- Renewable energy options available

Cooling

- Air-cooled chillers with airside economizers
- Fan coil wall cooling design with hot aisle containment and N+1 redundancy in the vault
- Dedicated modular chiller plant designed with a closed loop water cooling system for additional efficiency

Fire protection

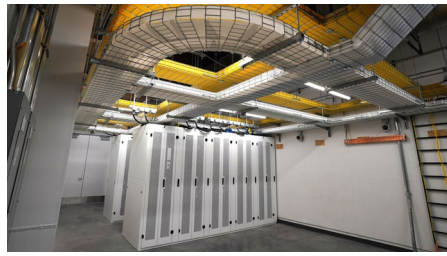
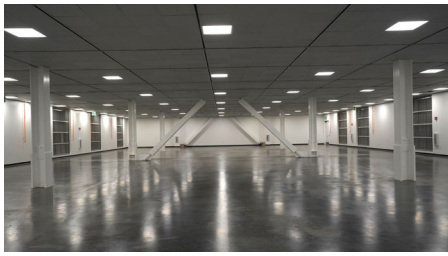
- Next generation safety management by ONYXWorks for centralized control and monitoring of the fire alarm system
- Dual interlocked nitrogen filled pre-action dry pipe fire suppression system
- Aspiration Smoke Detection (ASD) system enabling fast detection and mitigation

Security

- 24x7x365 Security and Operations team
- Fenced campus with centralized, electronic access control system
- 100+ real-time security feeds using pattern-based technology
- Multi-factor authentication throughout the facility
- Secure managed delivery and loading area 24x7x365

Connectivity

- Carrier-neutral
- Three diverse fiber entry points
- Two Meet-Me-Rooms
- Multiple Tier-1 carriers on-site including Level 3, Frontier and Wholesale Networks, with more to come
- Direct connectivity to major cloud providers, applications providers and enterprise ecosystem



Additional data center services

- Remote hands and eyes
- Fit-out and deployment
- Class A office space
- Dedicated long-term storage

Certifications and compliance

Compliance

- SOC1 and SOC2 Type II
- ISO 27001
- ISO 50001 Energy Management Systems
- PCI DSS
- NIST 800-53 High
- HIPAA

Sustainability

- Designed to LEED Gold Standards
- EPA ENERGY STAR

Data center products

- Cabinets
- Customizable cages
- Private suites
- Dedicated vaults
- Build to suit

Earthquake-resistant base isolation system

Solution: SV1 is the first data center in Santa Clara to incorporate a specific resilient building design that has been proven to help NTT's multi-story data centers in Japan successfully withstand significant earthquakes and return to operation with little to no interruption.

Features:

- Base isolation system that incorporates a combination of triple-friction pendulum pedestals and viscous dampers that dissipate energy and reduce building displacement
- Design allows the structure to move up to 32 inches in any horizontal direction during a seismic event
- Structure undergoes 60% less motion than a fixed, non-base isolated building, protecting the people and mission-critical infrastructure inside

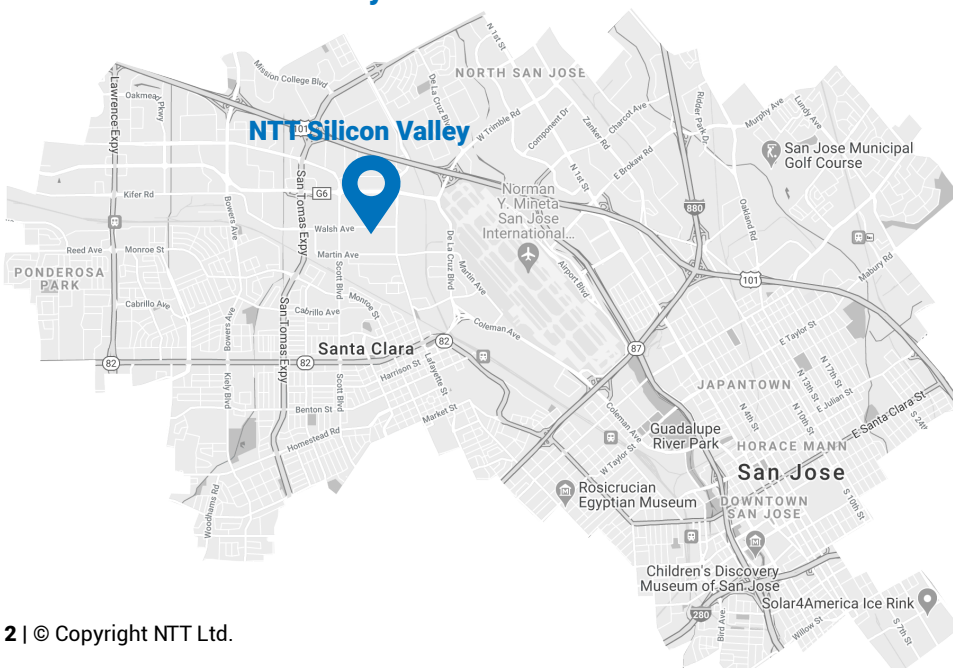
Address and contact

Silicon Valley SV1 Data Center

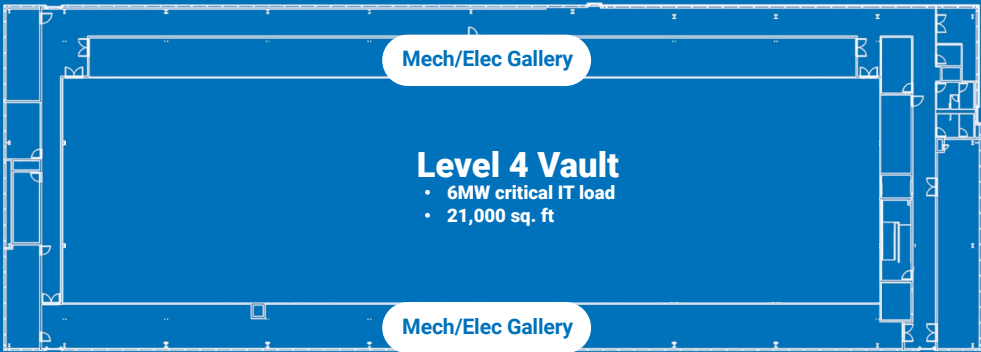
NTT Global Data Centers Americas
1160 Walsh Ave.
Santa Clara, CA 95050
United States

T: 916-286-3000

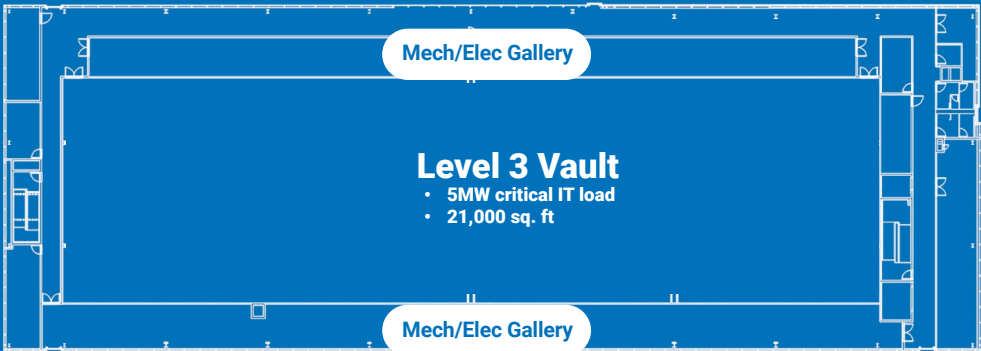
Locations in Silicon Valley



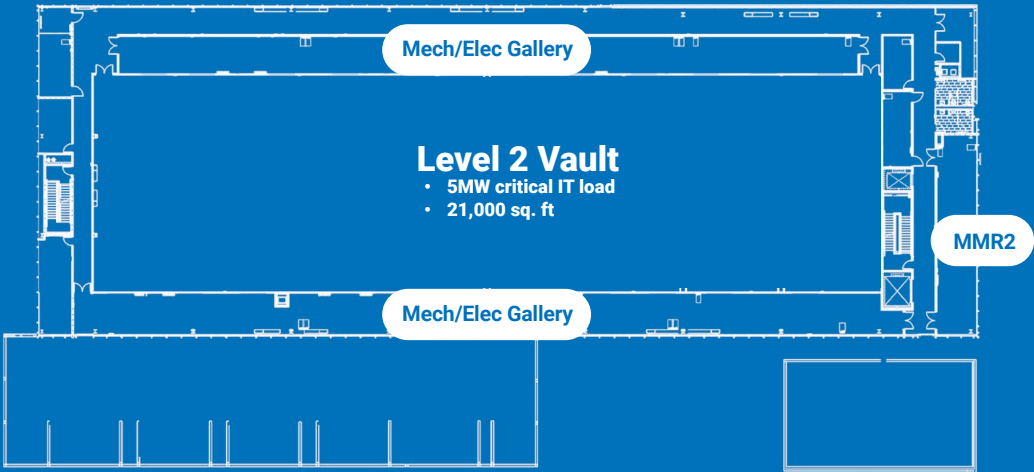
Floor 4



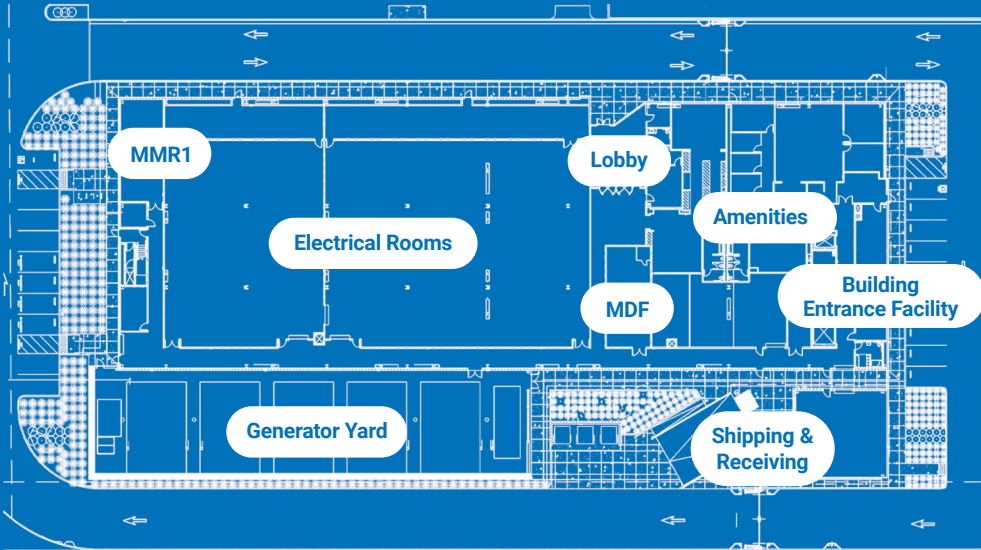
Floor 3



Floor 2



Floor 1



All rights reserved. The information in this data sheet contains only general descriptions which may not apply for each individual case or may change as products and services levels are adapted to new technological development. The required service elements are only binding when explicitly stated in a service contract. Technical specifications may be subject to alterations.