



## //Opus Interactive BB1 Tier III Portland Data Center

Mission Critical?

We Own That.

Unique Requirements?

Let's Make It Happen.

Starting Small...Big Plans?

Exciting! Love to Help.

Technology. meet humanity.



The Portland BB1 (Brewery Blocks 1) data center was purposely built by its previous owner, Tycom to serve as an endpoint for its high-capacity, undersea fiber cable linking the US with Asia. Considered to be critical National communications infrastructure, it's a TIA942 Certified facility, designed to remain online and operational in multitudes of potential adverse events. With its 2N and N+1 redundancy throughout, 8MW of Power, 4,000 Ton cooling capacity, and ample available space BB1 is built to be open for business.

Opus Interactive offers the following services and capabilities from the BB1 data center.

- AC and DC Power
- 80,000SF Total Space
- Pittock Exchange via Dark Fiber
- Low Latency IP to Asia
- 19 Service Providers
- Colocation Suites and Cages
- Comprehensive Managed Services
- Private Managed Cloud
- Metro Ethernet
- Meet-me-Room



# //Opus Interactive BB1 Tier III Portland Data Center

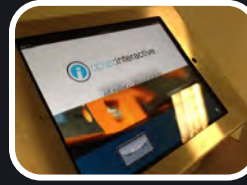
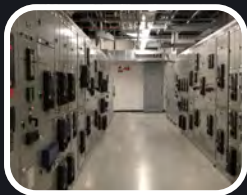
## BUILDING

### Construction

- 2002 Construction
- Zone 4 Seismic Reinforcement
- LEED Silver Certification

### Convenience

- Full size Loading Dock with Dock Leveler
- Large Freight Elevator with 7,000Lb Capacity
- Customer Parking in Adjoining Garage



## ENVIRONMENTAL

### Cooling

- Central Chilled Water Supply
- 4,000 Ton Central Cooling Plant
- Dual City Water Feeds N+1
- 24 CRAC Units Configured N+1 or Greater
- Ravica Leak Detection

### Fire Detection & Suppression

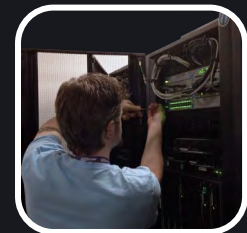
- VESDA Smoke Detection System
- Inergen Inert Gas Fire Suppression System
- Pre-Action Sprinkler System

### Physical Security

- ID Card Authentication Access Control
- CCTV System with 90 Day Recording Retention
- Biometrics Available to Cages/Suites

## CONNECTIVITY

- Diverse Path Fiber Entrances and Risers
- Basement Meet-Me-Room with Fiber Risers
- NWAX+SIX Blended Internet Feed
- Long Haul Transport Circuits to Westin Building (No Dependency on Pittock)
- Metro Ethernet (Optical and Copper)
- Short Hop/Low Latency IP to Asia



## POWER SYSTEM

### Utility Power

- Diverse, Dual Utility Vaults
- 2x - 12.47Kv Feeds from PGE High Availability Grids.
- 4x - 2.5MW Transformers in N+2 Configuration
- Permanently Installed Load Banks

### Standby Power Generation

- 3x - Paralleled 2.25MW Diesel Generators
- All Infrastructure in Place for 4<sup>th</sup> Generator
- Load Tested Quarterly

### Fuel Tanks

- 28,000 Gallons of On-site Diesel
- Multi-Vendor, Priority Refueling Contracts

### AC UPS

- A/B UPS Plants each with 3x - 750KW UPS Units N+1
- All Switch Gear in Place for C/D UPS Plants

### DC Plant

- A/B Plants Supplying 558Kv DC Power N+1

## AVAILABLE NETWORK SERVICE PROVIDERS

- AT&T\*
- Abovenet
- ACS Alaska\*
- Cogent\*
- Comcast\*
- Global Crossing\*
- he.net\*
- Integra Telecom
- Level 3
- LS Networks\*
- PAETEC (Windstream)\*
- Qwest/Centurylink
- SilverStar Telecom\*
- Verizon Business\*
- Spectrum Networks\*
- TATA
- TW Telecom
- XO
- Zayo (360Networks)\*

\* Available via Opus Interactive transport, wavelengths, or dark fiber to Pittock Internet Exchange